



Front Head

Cut 1 from Yellow

Front Left Arm

Cut 1 from Yellow

Front Right Arm

Cut 1 from Yellow

Front Body Section

Cut 2 from Yellow

Back Right Arm

Cut 1 from Yellow

Back Left Arm

Cut 1 from Yellow

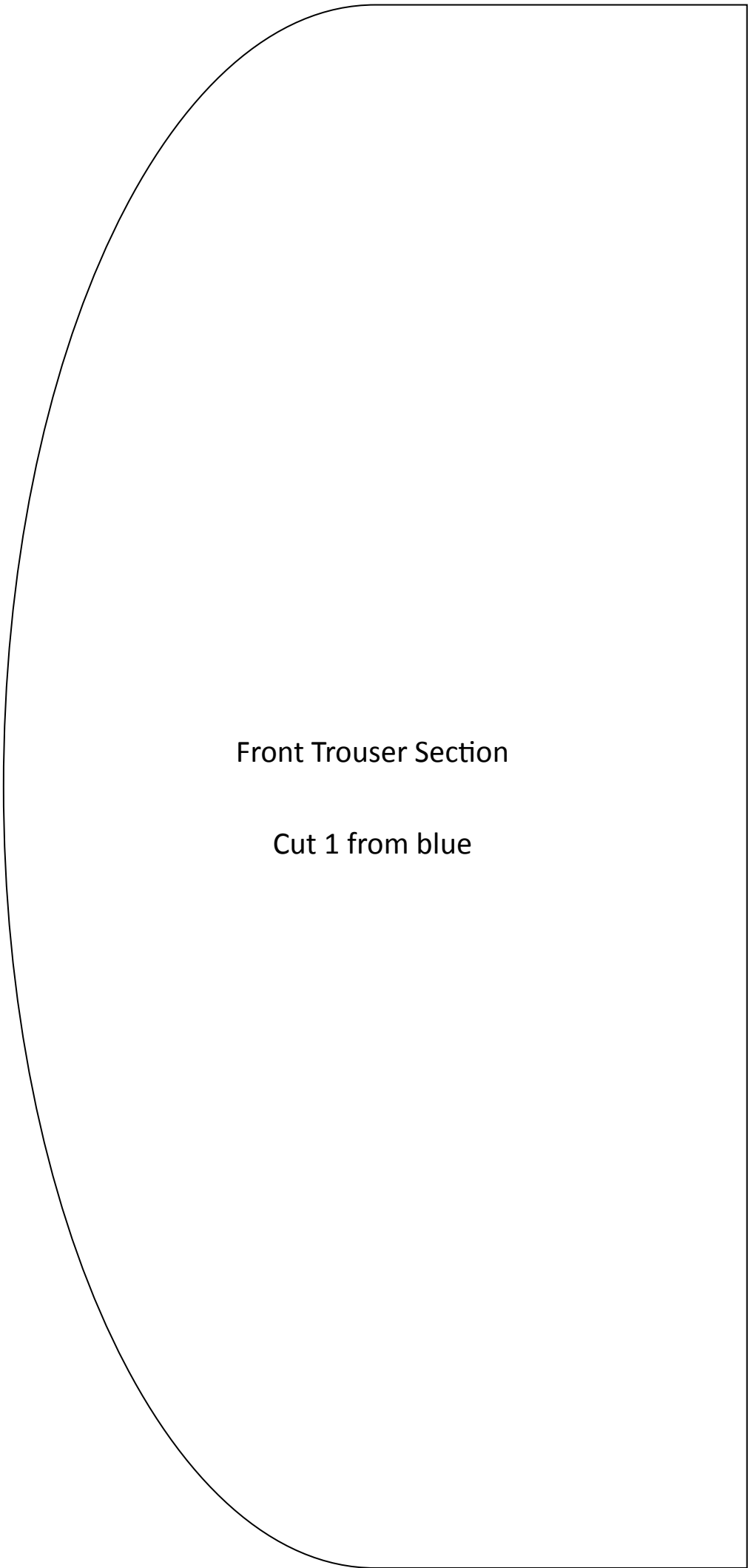
Back Body Section

Cut 2 from Yellow



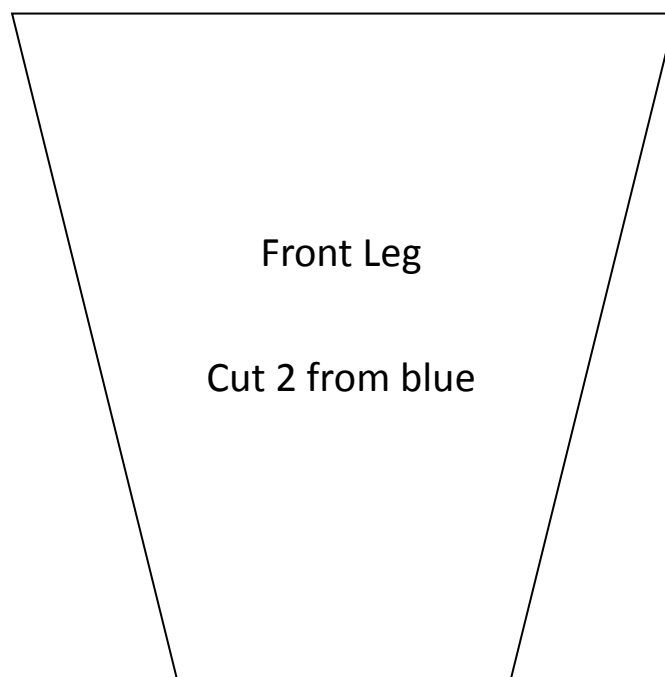
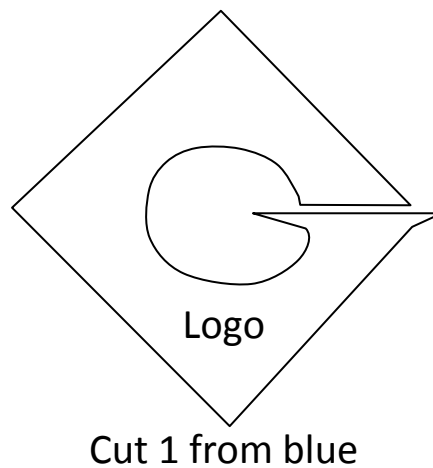
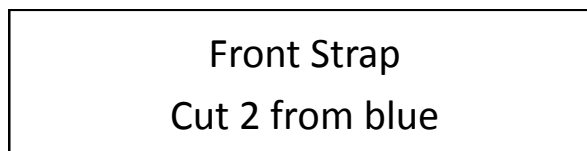
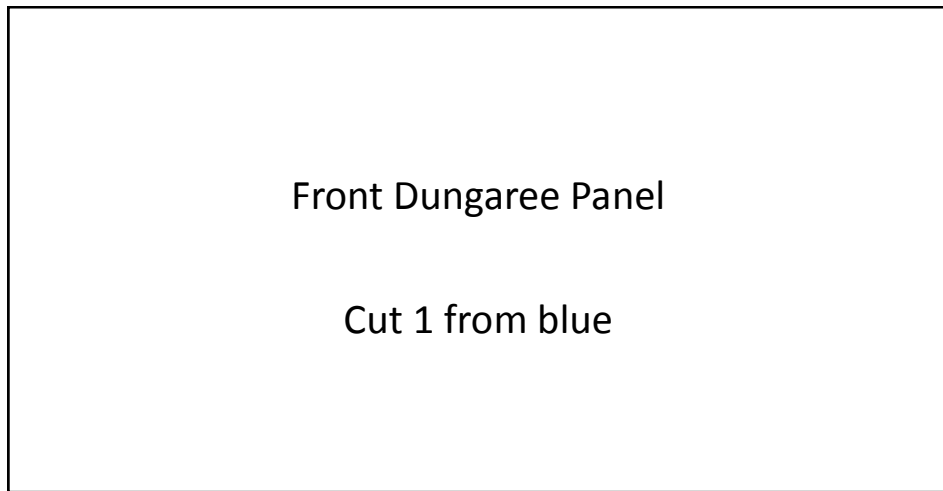
Back Head

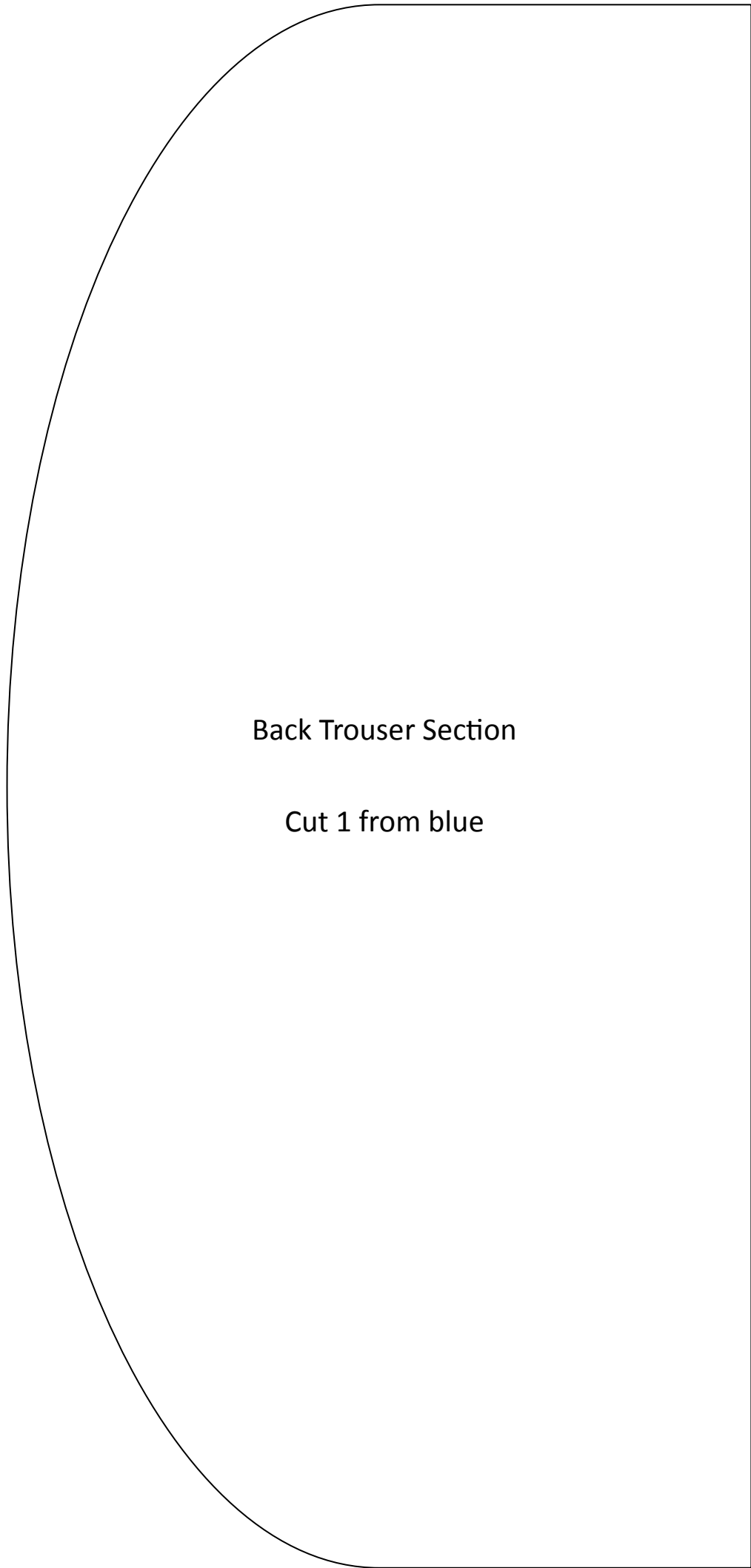
Cut 1 from Yellow



Front Trouser Section

Cut 1 from blue





Back Trouser Section

Cut 1 from blue

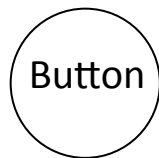
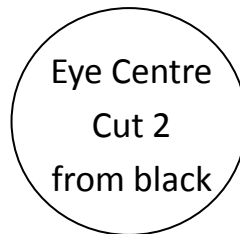
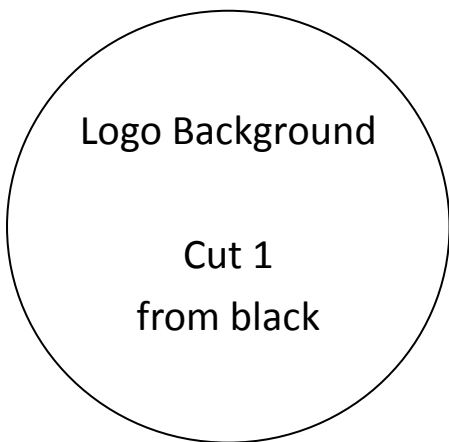
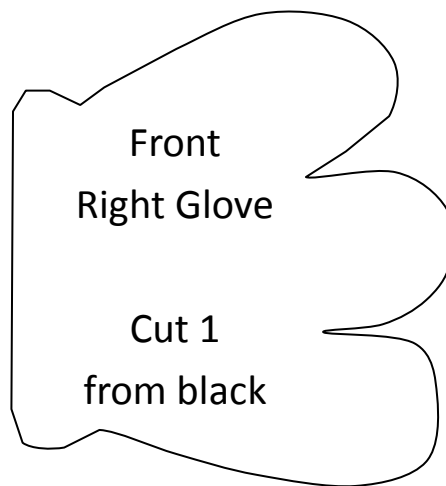
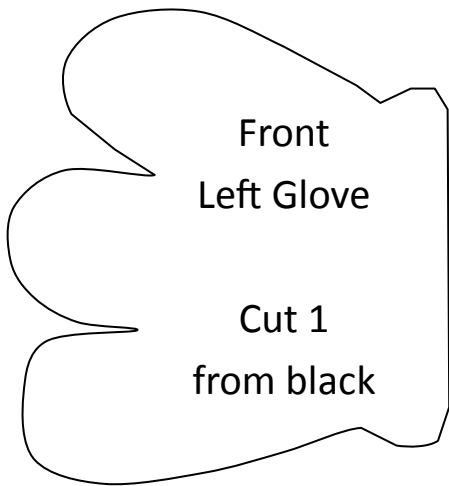
Back Dungaree Panel

Cut 1 from blue

Back Strap
Cut 2 from blue

Back Leg

Cut 2 from blue



Cut 2
from black

